

TEST REPORT

Applicant : Guangzhou Camaz Health Care Co., Ltd
Address : 2floor Building No.28, yiheng Road,Yadi Tech Park. Hetai Road,Hebian Street,Jiahe Town,Baiyun District,Guangzhou China

Report on the submitted sample said to be:

Sample name : Japanese Tourmaline Energy FIR Piece
Trade name : N/A
Model : CHC-JTN01
Manufacturer : Guangzhou Camaz Health Care Co., Ltd
Address : 2floor Building No.28, yiheng Road,Yadi Tech Park. Hetai Road,Hebian Street,Jiahe Town,Baiyun District,Guangzhou China
Test Requested : Based on the performed tests on submitted samples, the results of Lead, Mercury, Cadmium, Hexavalent chromium, Polybrominated biphenyls (PBBs), Polybrominated diphenyl ethers (PBDEs), Bis (2-ethylhexyl) phthalate (DEHP), Benzyl butyl phthalate (BBP), Dibutyl phthalate (DBP), Di Iso Butyl Ortho Phthalate (DIBP) comply with the limits as set by RoHS Directive (EU) 2015/863 amending Annex II to Directive 2011/65/EU.
Test Results : Please refer to next page (s).
Testing period : Oct. 17, 2018 to Oct. 24, 2018
Date of report : Oct. 24, 2018

***** FOR FURTHER DETAILS, PLEASE REFER TO THE FOLLOWING PAGE(S) *****

Prepared by:

Calvin Chen

Calvin Chen

Examine By :

Tony Mo

Tony Mo

Approved (Manager):



Michael Mo

Test Part Description:

No.	Description
1	Dark red PVC film

Remarks:

- (1) 1 mg/kg = 1 ppm = 0.0001%.
- (2) MDL = Method Detection Limit.
- (3) ND = Not Detected (< MDL).
- (4) "-" = Not Regulated.
- (5) According to IEC 62321-7-1:2015, determined of Cr⁶⁺ on metal sample by spot test /boiling water extraction test method, and result is shown as Positive/Negative.

Spot test:

Negative = Absence of Cr⁶⁺ coating,

Positive = Presence of Cr⁶⁺ coating.

(The tested sample should be further verified by boiling water extraction method if the spot test result is Negative or cannot be confirmed.)

Boiling water extraction:

Negative = Absence of Cr⁶⁺ coating,

Positive = Presence of Cr⁶⁺

The detected concentration in boiling water extraction solution is equal or greater than 0.02mg/kg with 50cm² sample surface area.

Information on storage conditions and production date of the tested sample is unavailable and thus Cr⁶⁺ results represent status of the sample at the time of testing.

Elementary Analysis & Flame Retardants

Test Method:

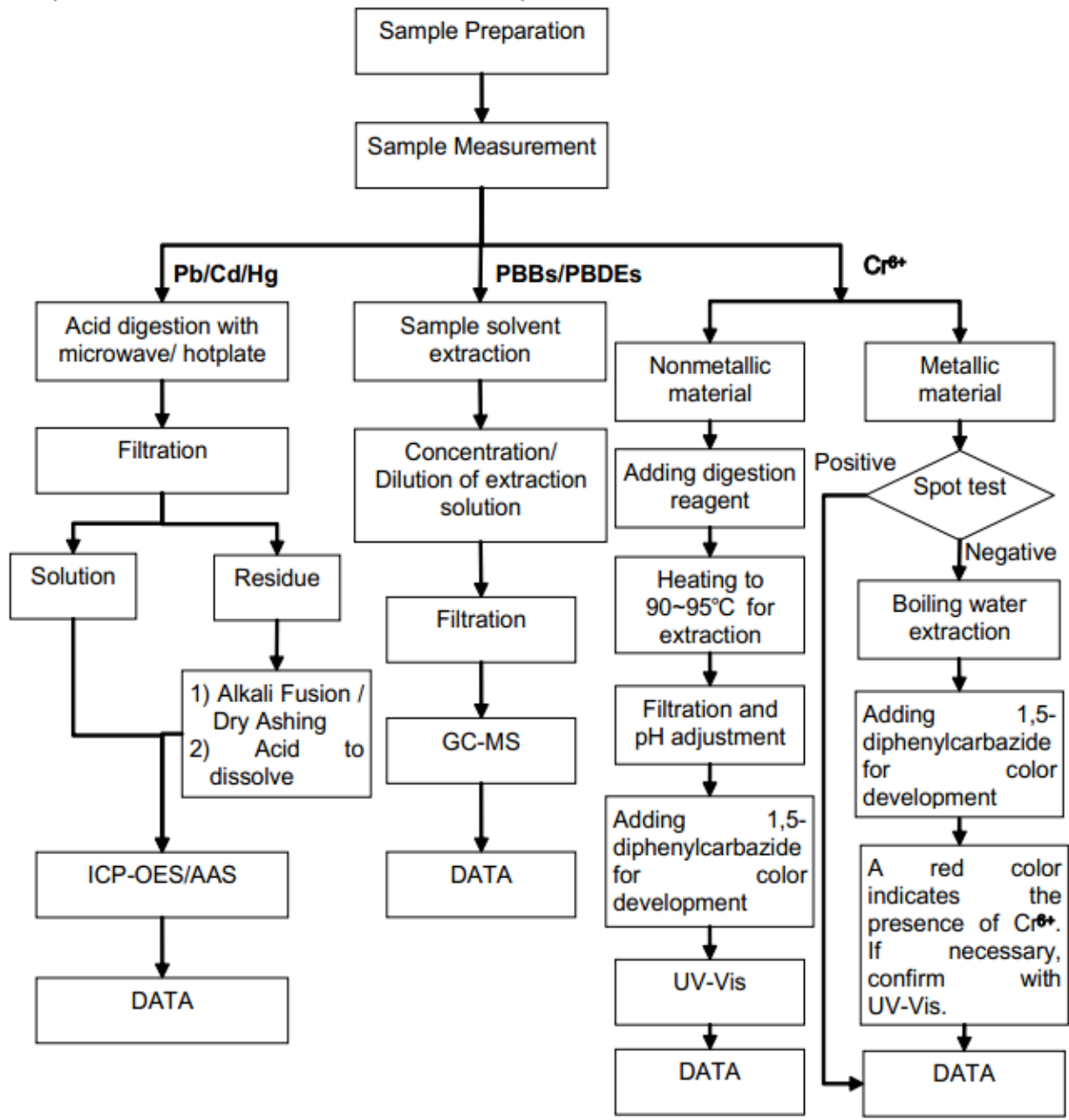
- (1) With reference to IEC 62321-5:2013, determination of Cadmium by ICP-OES.
- (2) With reference to IEC 62321-5:2013, determination of Lead by ICP-OES.
- (3) With reference to IEC 62321-4:2013, determination of Mercury by ICP-OES.
- (4) With reference to IEC 62321-7-1:2015, determination of Hexavalent Chromium by Colorimetric Method using UV-Vis
- (5) With reference to IEC 62321-6:2015, determination of PBBs and PBDEs by GC-MS.
- (6) With reference to IEC 62321-8:2017, determination of DEHP, DIBP, DBP and BBP by GC-MS

1. Test result

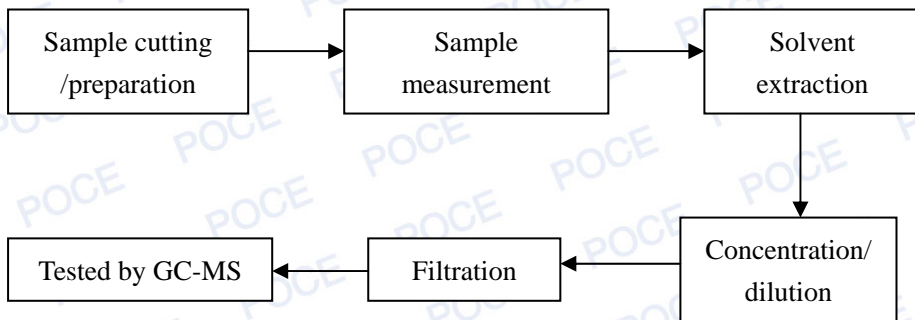
Test Item(s)	Limit	Unit	MDL	Result
				1
Cadmium (Cd).	100	mg/kg	2	ND
Lead (Pb).	1000	mg/kg	2	ND
Mercury (Hg).	1000	mg/kg	2	ND
Hexavalent Chromium (CrVI).	1000	mg/kg	2	ND
Sum of PBBs.	1000	mg/kg	-	ND
Monobromobiphenyl.	-	mg/kg	5	ND
Dibromobiphenyl.	-	mg/kg	5	ND
Tribromobiphenyl.	-	mg/kg	5	ND
Tetrabromobiphenyl.	-	mg/kg	5	ND
Pentabromobiphenyl.	-	mg/kg	5	ND
Hexabromobiphenyl.	-	mg/kg	5	ND
Heptabromobiphenyl.	-	mg/kg	5	ND
Octabromobiphenyl.	-	mg/kg	5	ND
Nonabromobiphenyl	-	mg/kg	5	ND
Decabromobiphenyl.	-	mg/kg	5	ND
Sum of PBDEs.	1000	mg/kg	-	ND
Monobromodiphenyl ether.	-	mg/kg	5	ND
Dibromodiphenyl ether.	-	mg/kg	5	ND
Tribromodiphenyl ether.	-	mg/kg	5	ND
Tetrabromodiphenyl ether.	-	mg/kg	5	ND
Pentabromodiphenyl ether.	-	mg/kg	5	ND
Hexabromodiphenyl ether.	-	mg/kg	5	ND
Heptabromodiphenyl ether.	-	mg/kg	5	ND
Octabromodiphenyl ether	-	mg/kg	5	ND
Nonabromodiphenyl ether.	-	mg/kg	5	ND
Decabromodiphenyl ether.	-	mg/kg	5	ND
Bis (2-ethylhexyl) phthalate (DEHP)	-	mg/kg	5	ND
Benzyl butyl phthalate (BBP)	-	mg/kg	5	ND
Dibutyl phthalate (DBP)	-	mg/kg	5	ND
Di Iso Butyl Ortho Phthalate (DIBP)	-	mg/kg	5	ND
Result	-	-	-	Pass

FLOW CHART FOR RoHS TESTING:

1. Lead(Pb), Cadmium(Cd), Mercury (Hg), Chromium(Cr VI), PBBs and PBDEs



2. DIBP, DEHP, BBP, DBP



PHOTOGRAPH OF SAMPLE:

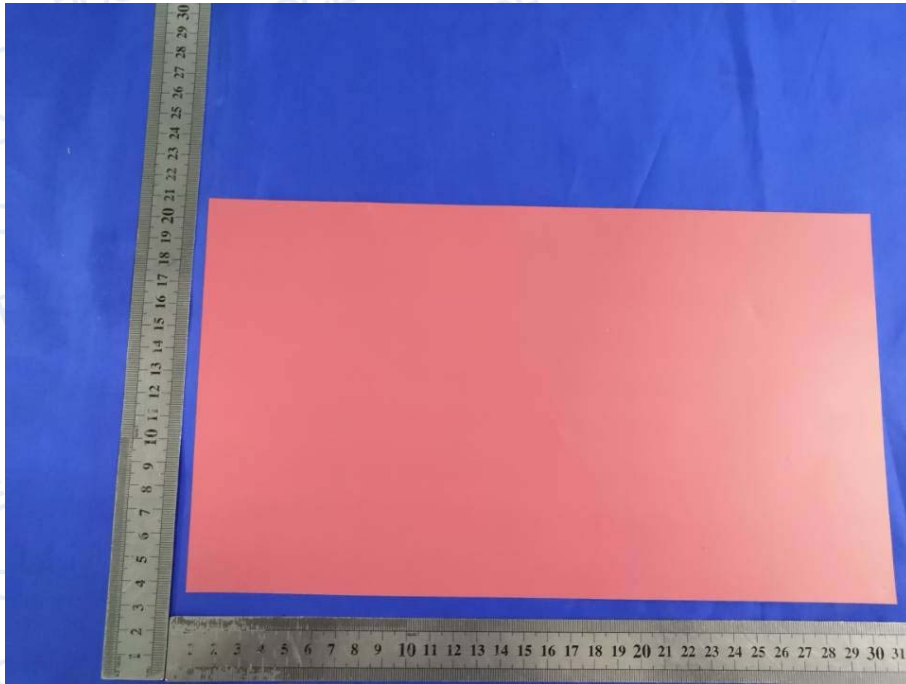


Photo 1

END OF REPORT